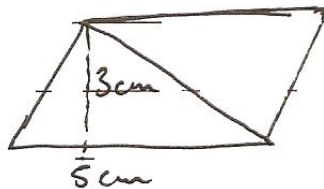


- Q.1 Which of the following is an insectivorous plant?
(a) Cuscuta (b) Mushroom (c) Pitcher Plant (d) Mistletoe
- Q.2 Which of these is not a reason for water scarcity?
(a) Global Warming (b) Water pollution (c) industrialization (d) Rainwater harvesting
- Q.3 Which of the following is not safety device used in an electric circuit
(a) MCB (b) Electrical fuse (c) Magnet (d) Cartridge fuse
- Q.4 Which of the following is correct ?
(a) $\angle i > \angle r$ (b) $\angle i = \angle r$ (c) $\angle i < \angle r$ (d) $\angle i \neq \angle r$
- Q.5 Which part of the flower converts to a fruit?
(a) Sepals (b) Petals (c) Ovary (d) Ovule
- Q.6 Rusting of iron can be prevented by
(a) Alloying (b) Painting (c) Galvanization (d) All of these
- Q.7 Which of the following organisms make the soil porous?
(a) Algae (b) Fungi (c) Earthworm (d) Protozoa
- Q.8 Which of the following is an acid:
(a) NaOH (b) H_2SO_4 (c) KOH (d) $CaCO_3$
- Q.9 The boiling point of water on the kelvin scale is –
(a) 273 K (b) 100 K (c) 212 K (d) 373 K
- Q.10 Yeast is used in wine and beer industries because it produces
(a) Oxygen (b) Alcohol (c) Water (d) CO_2
- Q.11 Find the ratio 30 days to 36 hours
(a) 1 : 20 (b) 20 : 1 (c) 3 : 6 (d) 20 : 2
- Q.12 Find 20% of Rs. 2500
(a) 500 (b) 1000 (c) 1500 (d) 1200
- Q.13 Find the amount at the end of 3 years if principal is 1200 @ 12%
(a) 1324 (b) 1532 (c) 1632 (d) 1728
- Q.14 $\frac{3}{-5} \times \frac{-5}{3}$
(a) -1 (b) 1 (c) 2 (d) -2
- Q.15 Find the area:



- (a) $15cm^2$ (b) $14cm^2$ (c) $13cm^2$ (d) $12cm^2$
- Q.16 Find the circumference of circle with diameter = 49 m.
(a) $1786.5 m^2$ (b) $1685.5 m^2$ (c) $1886.5 m^2$ (d) $1736.5 m^2$
- Q.17 Subtract (a - b) from (a + b)
(a) 2b (b) 3b (c) 4b (d) b
- Q.18 Find x for $19 - 5x^2$ if $x = 2$
(a) -3 (b) -4 (c) 4 (d) -1
- Q.19 Simplify $(-3)^2 \times (-5)^2$

- Q.20 Using powers of exponents find $6^{15} \div 6^{10}$
- | | | | |
|-----------|-----------|--------------|--------------|
| (a) 225 | (b) 625 | (c) 525 | (d) 125 |
| (a) 6^3 | (b) 6^5 | (c) 6^{25} | (d) 6^{15} |